



Scale 1 Scale 2 Scale 3 Scale 4 Scale 5 Scale 6 Scale 7 Scale 8 Scale 9 Scale 10 Output

Scale name in Kontakt™ 2: 36equalDivLength

Scale in Cents (x1000)

```
! Monochord36.scl  
!  
36DivisionsOfMonochord  
18  
!  
36/35  
18/17  
12/11  
9/8  
36/31  
6/5  
36/29  
9/7
```

```
48770  
98955  
150637  
203910  
258874  
315641  
374333  
435084  
498045  
563382  
631283  
701955  
775636
```

Load Scala file to selected tab

E:\Scales\36equalDivLength.scl

Generate Kontakt™ 2 script to output tab

Click the Generate script button.



Scale 1 Scale 2 Scale 3 Scale 4 Scale 5 Scale 6 Scale 7 Scale 8 Scale 9 Scale 10 Output

SelectAll/Copy

Save

```
on init
{
Scala 2 Kontakt Microtuner
by Robert Strauss
http://www.12equalboresme.com
1/6/2007 build
}
declare ui_button $perfvieiw
$perfvieiw:= 0
set_text ($perfvieiw,"perfvieiw off")
_read_persistent_var($perfvieiw)
if ($perfvieiw = 1)
    make_perfvieiw
end if
```

Load Scala file to selected tab

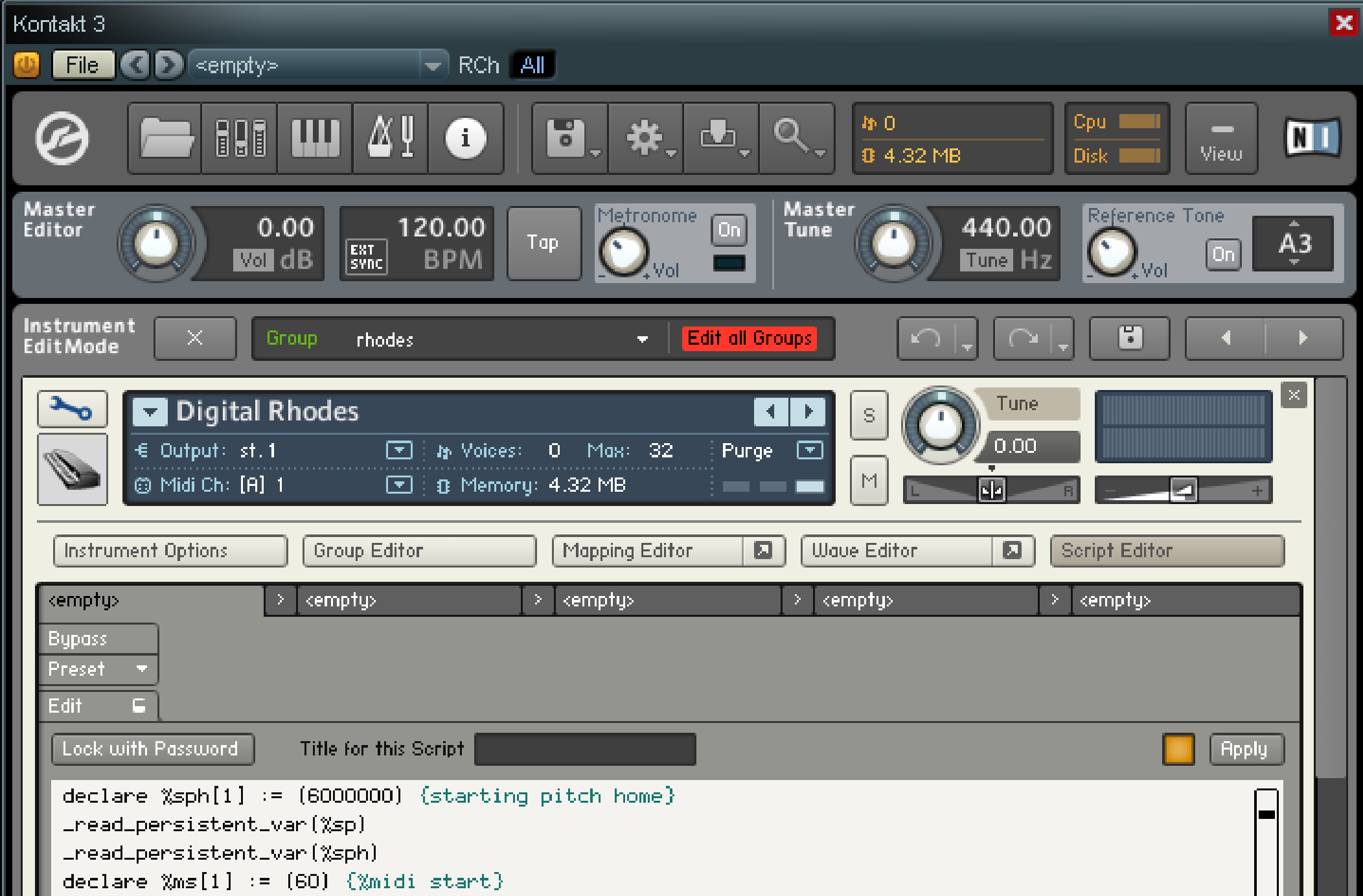
E:\Scales\36equalDivLength.scl

Generate Kontakt™ 2 script to output tab

Click the Select All / Copy button. This copies the script to the PC's clipboard. Or click save to save the script as a WordPad (.rtf) document.



Open Kontakt and click the script editor button. Click in the edit area. (Be sure the edit window has focus – may have to click twice.) Click “Ctrl V” to paste the contents of the Clipboard into the script editor.



Click the Apply button to build the Microtuner and close the edit window.



The save preset option enables naming the script and saving it as a .nkp file for use with other instruments.